

SAWS Collection Impact Fee CIP

Jennifer Ivey, P.E.

Lori Carter

Red Oak ARCADIS

November 7, 2013

CIAC Meeting



Collection Impact Fee CIP Overview

- SAWS Sewer System
- Collection System Hydraulic Model
- Changes from 2011 Impact Fee Study
- Capacity Calculations for 2013 to 2024 CIP
- CIP Values for 2013 to 2024
- Existing Collection System Values
- Eligible Wastewater Collection CIP

San Antonio Water System

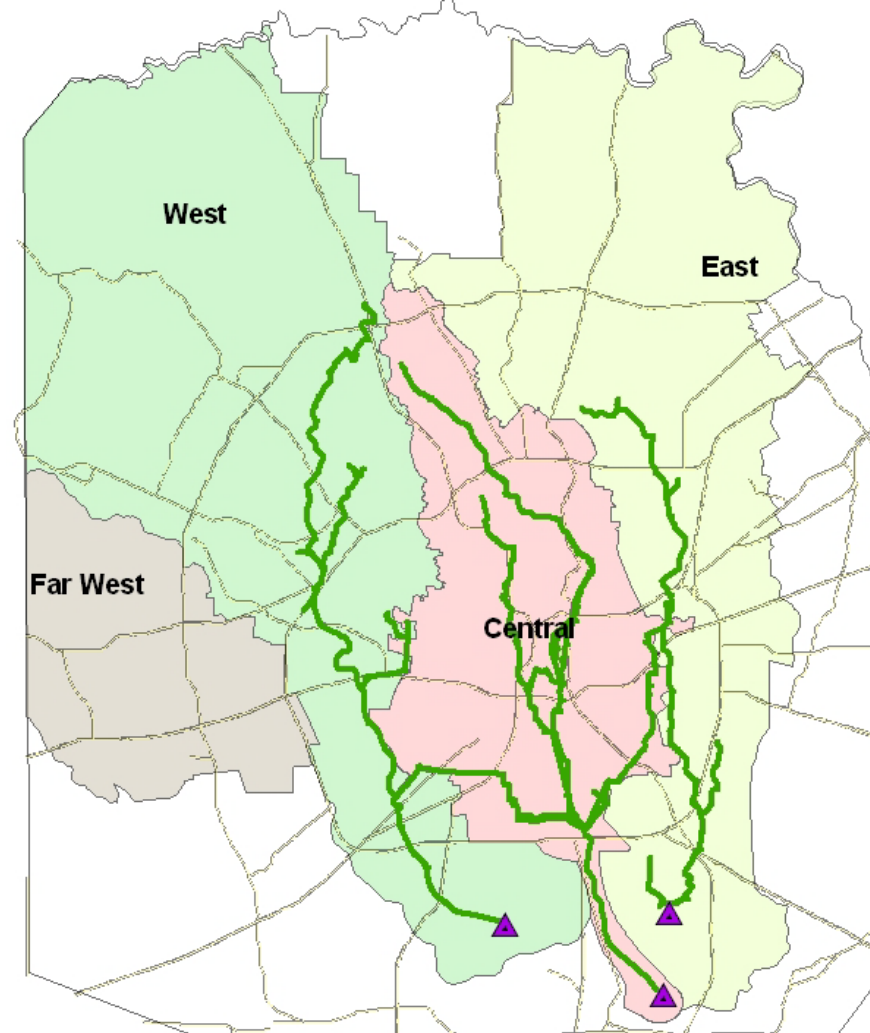
•SAWS Sewer System

- ~5,200 miles of sewer main
 - ~ 350 miles LD (\geq 24-inch)
 - ~ 4,850 miles SD
 - Includes ~ 680 miles in EARZ
- 98,000 manholes
- 300 siphons
- 80 miles of force main
- 156 lift stations
- 3 wastewater treatment plants



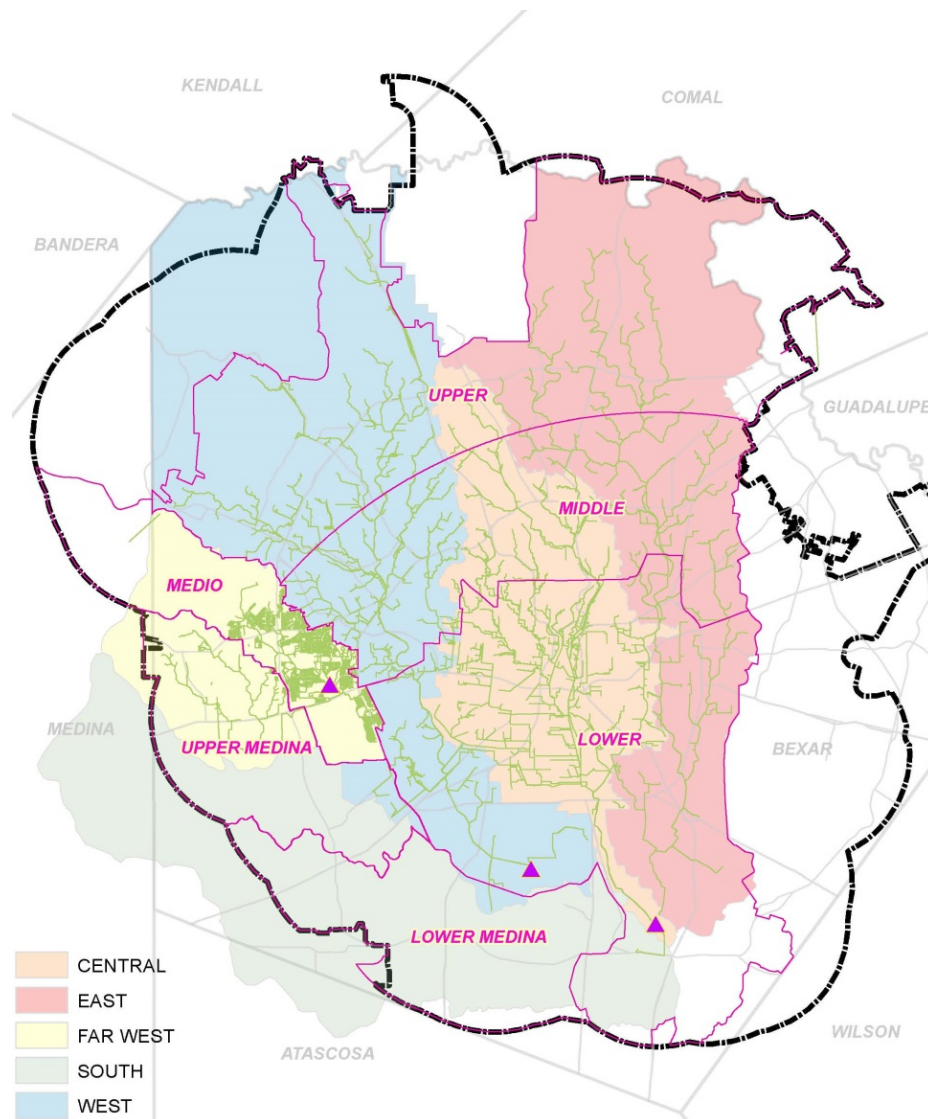
1998 Collection System Model

- First Hydraulic Model
- Only large diameter mains (24"+)
- 4% of total system modeled
- HydroWorks software was used



2013 Collection System Model

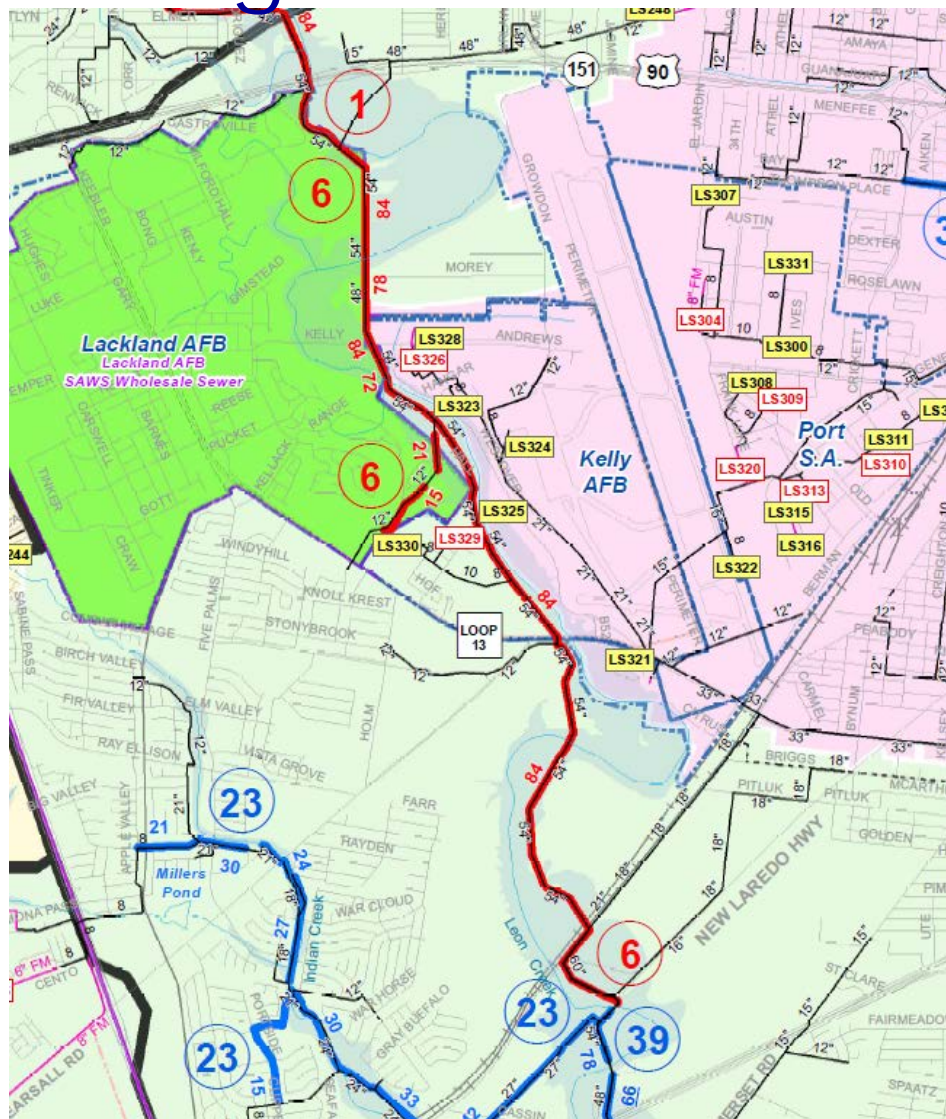
- Primarily large diameter mains (12"+)
- 23% of total system modeled
- InfoWorks CS software used to create models
- Separate models for each basin (Far West, West, Central, and East)
- Currently Building the model for Lower/Upper Medina



Changes from 2011 Impact Fee Study

- Revised Cost Estimates for all Projects
- 7 Projects Completed
- 2 Projects under Construction
- 10 Projects under Design
- 1 Projects Removed
- 5 New Projects Added

Changes from 2011 Study-Project W_6



- W_6 Western Relief Project 90" Pipeline
 - \$86M vs. \$50M
 - 6 phases/segments
 - Rerouted portions
 - 90" vs 84"
 - Easement Costs
 - Lackland/Environmental Costs
 - Needs be completed by
- Eligible Impact Fee CIP
 - \$11.8 M

Capacity Calculations for 2013 to 2024 CIP

- Capacity calculation for new projects is based on same methodology as 2011 Impact Fee Study
- Adjustments were made in the flow calculation spreadsheet to reflect the 2014 to 2023 change in EDU's for each project
- W_6 Western Relief Project = \$78.7 M

Ultimate Flow Capacity = 270.78 MGD = 100%

Existing Flow = 103.5 MGD = 38% capacity

2014 to 2023 Flow = 40.46 MGD = 15% capacity

Post 2023 Flow = 127.18 MGD = 47%

Eligible CIP = \$78.7 M X 15% = \$11.8 M

CIP Values 2011 to 2014

Service Area	2011 Values			2014 Values		
	Value of Capacity (\$ mil)	Value of Eligible Capacity (\$ mil)	*Eligible Financing Costs (\$ mil)	Value of Capacity (\$ mil)	Value of Eligible Capacity (\$ mil)	*Eligible Financing Costs (\$ mil)*
Medio	\$ 38.7	\$ 7.2	\$ -	\$ 29.7	\$ 5.2	\$ -
Upper Medina	\$ 39.0	\$ 5.6	\$ -	\$ 32.4	\$ 8.4	\$ -
Lower Medina	\$ 59.9	\$ 9.4	\$ -	\$ 25.5	\$ 2.9	\$ -
Upper Collection	\$ 100.0	\$ 20.5	\$ -	\$ 124.2	\$ 21.1	\$ -
Middle Collection	\$ 207.4	\$ 12.0	\$ -	\$ 292.5	\$ 18.7	\$ -
Lower Collection	\$ 268.2	\$ 20.3	\$ -	\$ 267.7	\$ 16.7	\$ -
Total	\$ 713.2	\$ 75.0	\$ -	\$ 772.0	\$ 73.0	\$ -

Existing Collection System Values (Equity)

Service Area	2011 Values			2014 Values		
	Value of Capacity (\$ mil)	Value of Eligible Capacity (\$ mil)	*Eligible Financing Costs (\$ mil)	Value of Capacity (\$ mil)	Value of Eligible Capacity (\$ mil)	*Eligible Financing Costs (\$ mil)*
Medio	\$ 21.2	\$ 2.1	\$ 1.0	\$ 17.3	\$ 2.2	\$ 1.9
Upper Medina	\$ 7.9	\$ 0.8	\$ 0.3	\$ 34.6	\$ 9.7	\$ 3.1
Lower Medina	\$ 1.6	\$ 0.2	\$ 0.1	\$ 28.5	\$ 6.5	\$ 1.1
Upper Collection	\$ 94.5	\$ 9.5	\$ 4.3	\$ 85.6	\$ 14.1	\$ 7.9
Middle Collection	\$ 166.2	\$ 16.6	\$ 7.6	\$ 153.1	\$ 14.3	\$ 7.0
Lower Collection	\$ 154.0	\$ 15.4	\$ 7.1	\$ 300.3	\$ 24.3	\$ 6.3
Total	\$ 445.4	\$ 44.6	\$ 20.4	\$ 619.4	\$ 71.1	\$ 27.3

Eligible Wastewater Collection CIP

Service Area	2014-2023 Eligible Wastewater Collection CIP Costs							
	Existing Capacity (Existing Collection Value)			New CIP Capacity (2014-2023 Collection Projects)			Total Capacity	
	Value of Capacity (\$ mil)	Value of Eligible Capacity (\$ mil)	*Eligible Financing Costs (\$ mil)	Value of Capacity (\$ mil)	Value of Eligible Capacity (\$ mil)	*Eligible Financing Costs (\$ mil)	Total Value of Capacity (\$ mil)	Total Value of Eligible Capacity (\$ mil)
Medio Creek	\$ 17.3	\$ 2.2	\$ 1.9	\$ 29.7	\$ 5.2	\$ -	\$ 47.1	\$ 9.3
Upper Medina	\$ 34.6	\$ 9.7	\$ 3.1	\$ 32.4	\$ 8.4	\$ -	\$ 67.0	\$ 21.2
Lower Medina	\$ 28.5	\$ 6.5	\$ 1.1	\$ 25.5	\$ 2.9	\$ -	\$ 54.0	\$ 10.4
Upper Collection	\$ 85.6	\$ 14.1	\$ 7.9	\$ 124.2	\$ 21.1	\$ -	\$ 209.8	\$ 43.0
Middle Collection	\$ 153.1	\$ 14.3	\$ 7.0	\$ 292.5	\$ 18.7	\$ -	\$ 445.6	\$ 40.0
Lower Collection	\$ 300.3	\$ 24.3	\$ 6.3	\$ 267.7	\$ 16.7	\$ -	\$ 568.0	\$ 47.2
Total	\$ 619.4	\$ 71.1	\$ 27.3	\$ 772.0	\$ 73.0	\$ -	\$ 1,391.4	\$ 171.4

* Numbers are estimated from Previous years, will be revised, but should be similar

Eligible Wastewater Collection CIP

Service Area	2011-2020		2014-2023	
	Total Value of Capacity (\$ mil)	Total Value of Eligible Capacity (\$ mil)	Total Value of Capacity (\$ mil)	Total Value of Eligible Capacity (\$ mil)
Medio Creek	\$ 59.9	\$ 10.3	\$ 47.1	\$ 9.3
Upper Medina	\$ 46.9	\$ 6.7	\$ 67.0	\$ 21.2
Lower Medina	\$ 61.5	\$ 9.6	\$ 54.0	\$ 10.4
Upper Collection	\$ 194.5	\$ 34.4	\$ 209.8	\$ 43.0
Middle Collection	\$ 373.5	\$ 36.2	\$ 445.6	\$ 40.0
Lower Collection	\$ 422.2	\$ 42.8	\$ 568.0	\$ 47.2
Total	\$ 1,158.5	\$ 140.0	\$ 1,391.5	\$ 171.1

QUESTIONS ?

SAWS Collection Impact Fee CIP

Jennifer Ivey, P.E.

Lori Carter

Red Oak ARCADIS

November 7, 2013

CIAC Meeting

